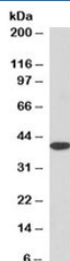


## MRG15 Antibody [Biotin Conjugate] (R33154BTN)

Catalog No.	Formulation	Size
R33154BTN	0.5 mg/ml in 1X TBS, pH7.3, with 0.5% BSA (US sourced) and 0.02% sodium azide	100 ug

[Bulk quote request](#)

Availability	1-3 business days
Species Reactivity	Human, Mouse
Predicted Reactivity	Rat, Pig, Cow
Format	Biotin Conjugate
Clonality	Polyclonal (goat origin)
Isotype	Goat Ig
Purity	Antigen affinity
UniProt	Q9UBU8
Gene ID	10933
Applications	Western Blot : 2-4ug/ml ELISA (peptide) LOD : 1:128000
Limitations	This MRG15 antibody is available for research use only.



Western blot testing of mouse liver lysate with MRG15 antibody at 3.3ug/ml. An NAP blocker was used in place of non-fat milk as blocking solution and diluent. (1)

### Description

Additional name(s) for this target protein: MORF-related gene 15; MORF4L1

### Application Notes

Optimal dilution of the MRG15 antibody should be determined by the researcher.

1. Do not use a blocking agent or diluent that contains biotin (including milk and some BSA preparations) when testing with biotinylated antibodies. A non-animal protein (NAP) blocker is recommended.

## **Immunogen**

Amino acids APKQDPKPKFQEG were used as the immunogen for this MRG15 antibody.

## **Storage**

Aliquot and store the MRG15 antibody at -20oC.